

## SECURITY SHOWER CABINETS

SIZE	ONE PIECE	KNOCK DOWN
30" x 30" x 88" (762mm x 762mm x 2235mm)	8160	8660
32" x 32" x 88" (813mm x 813mm x 2235mm)	8161	8661
36" x 36" x 88" (914mm x 914mm x 2235mm)	8162	8662

These Shower Cabinets are designed for use where an accessible pipe chase exists. They are fabricated using 14-gauge type 304 stainless steel. One piece showers are continuously welded to form a one piece leak proof enclosure. Knock down styles utilize a one piece receptor. Walls and ceiling parts are assembled at the job site using caulking to seal the joints and stainless steel security screws to join the components. Standard waste consists of an integral perforated strainer with a 2 3/8" OD (60mm) stainless steel elbow waste with plain end piped to the chase wall and extended 4" (102mm) past the base of the fixture. Shower head is pre-piped to the front left jamb inside the shower with 1/2" (13mm) type L copper tubing to the pipe chase. Valve is shipped loose for installation in the pipe chase. Shower floor has a slip resistant surface. Shower flooring is reinforced with heavy channels to prevent flexing. Exposed fasteners are vandal resistant stainless steel.

## INSTALLATION

An accessible pipe chase and wall openings as shown on drawings must be provided. Security showers are secured in place with four 1/2" (13mm) diameter plated steel anchor rods which screw into sockets on the fixture. Anchor rods pass through the wall and are secured from the pipe chase using lug plates and hex nuts provided. Fixture may be additionally secured to the floor using bolts through holes provided at the front corners inside the mullion (door jamb) covers. Water and waste connections are made in the pipe chase.

NOTE: A security frame (wall sleeve) is recommended when installed on a new block (CMU) or poured concrete wall. A security frame is not appropriate for hollow wall construction.



Unit may be pictured with some optional features.

## STANDARD FEATURES

- 30 degree security shower head with vandal resistant adjustable spray.
- Surface mounted soap tray.
- Single temperature pushbutton pneumatic metering valve with strainer/checkstop inlet. Tempered water supply is required.
- Security towel hook.
- Ventilation grille (on chase side).
- Integral strainer with stainless steel elbow waste piped to chase.
- Slip resistant shower floor design.
- 2.5 gallon per minute flow

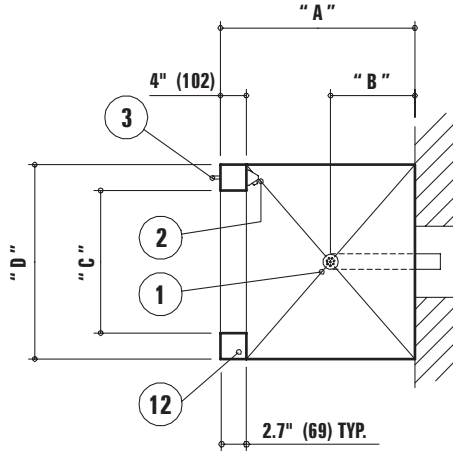
## OPTIONS & ACCESSORIES

Listing of available options and accessories is located on page 6-11 at the back of this section.

# METCRAFT

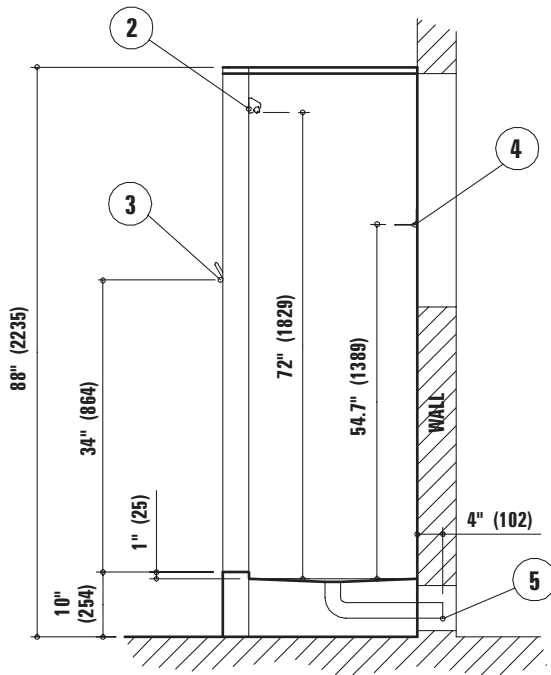
INDUSTRIES INC.

**PLAN VIEW SECTION**

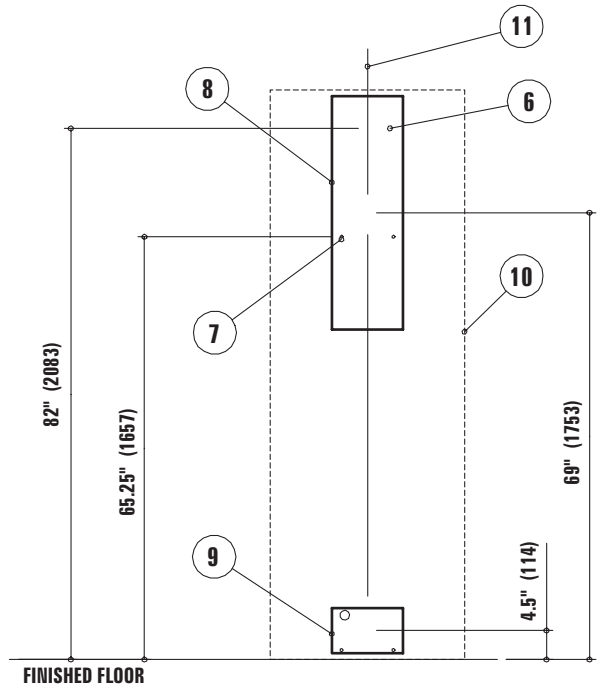


	A	B	C	D
8160/8660	29 <sup>3</sup> / <sub>4</sub> " (756mm)	13" (330mm)	22" (559mm)	29 <sup>3</sup> / <sub>4</sub> " (756mm)
8161/8661	31 <sup>3</sup> / <sub>4</sub> " (806mm)	14" (356mm)	24" (610mm)	31 <sup>3</sup> / <sub>4</sub> " (806mm)
8162/8662	35 <sup>3</sup> / <sub>4</sub> " (908mm)	16" (406mm)	28" (711mm)	35 <sup>3</sup> / <sub>4</sub> " (908mm)

**SIDE ELEVATION SECTION**



**WALL ELEVATION (fixture side)**



**ROUGH-IN INFORMATION**

- |                                      |  |  |
|--------------------------------------|--|--|
| ① Integral perforated strainer drain | ⑦ Wall anchor locations (4)  | ⑪ Center line on drain connection                    |
| ② Penal shower head                  | ⑧ 11" x 36" (279mm x 914mm) wall opening for valves and vent grille          | ⑫ Floor anchor locations (2)                         |
| ③ Tension release towel hook         | ⑨ 11" x 7" (279mm x 178mm) wall opening for drain and shower head connection | ⑬ 1/2" (13mm) FIPT connection for shower head supply |
| ④ Surface mounted soap dish          | ⑩ Fixture outline  | ⑭ 2 3/8" (60mm) OD waste tube                        |
| ⑤ Elbow waste                        |  |  |
| ⑥ Vent grille (on fixture)           |  |  |

Due to continuous product improvement Metcraft reserves the right to make changes in design and specifications without prior notice. All dimensions should be verified with the factory for current information.

NOTE: Elbow waste is 4.125" (105mm) above finished floor.

P-Trap waste is 6" (152mm) above finished floor.

2004

**METCRAFT**

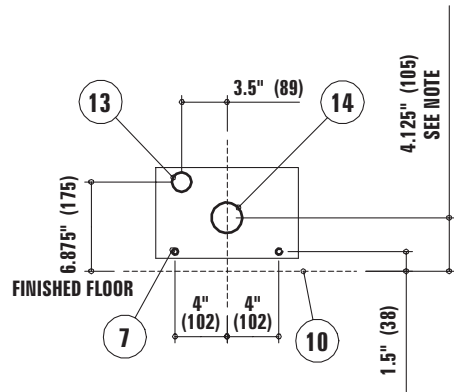
INDUSTRIES, INC.

## OPTIONS & ACCESSORIES

**8160/8161/8162 ONE PIECE  
8660/8661/8662 KNOCK DOWN**

- A120** Security frame (wall sleeve)
  - S0** Recessed soap dish
  - PSH-2** Shower head 17½ degree
  - A312** Hot & cold, pneumatic valve
  - CD2** 2" (51mm) Straight caulk floor drain
  - PTB** P-trap waste 2.375" (60mm) s/s w/plain end connection
  - A530** Sloping top cover 8160/8660
  - A531** Sloping top cover 8161/8661
  - A532** Sloping top cover 8162/8662
  - A570** Ceiling closures
  - A575** Wall closures
  - FC20** 2.0 gallon per minute flow
- Optional chase styles (see below)

## WASTE/INLET DETAIL



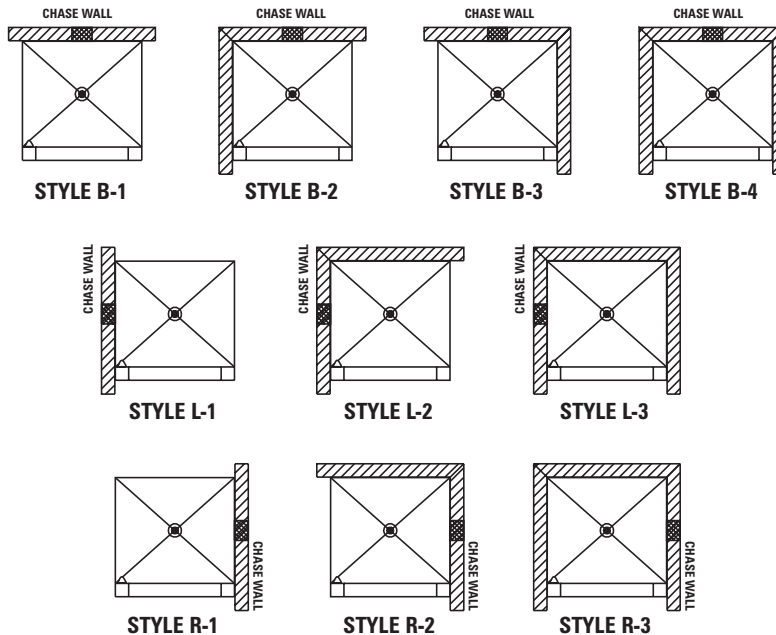
NOTE: See page 6-10 for rough-in information.

## SHOWER CABINET CHASE STYLE SELECTION GUIDE

### NOTE:

- Front, interior and exposed sides are polished.
- Top and unexposed sides are not polished.
- If a recessed soap dish is desired on style B-4, L-3 or R-3 it will be located on the back wall.

- Location of the chase wall of a shower cabinet must be provided when the shower cabinet is ordered. This is the side of the shower cabinet where the valving, piping connections and ventilation grille are normally located.



# METCRAFT

INDUSTRIES INC.

2004